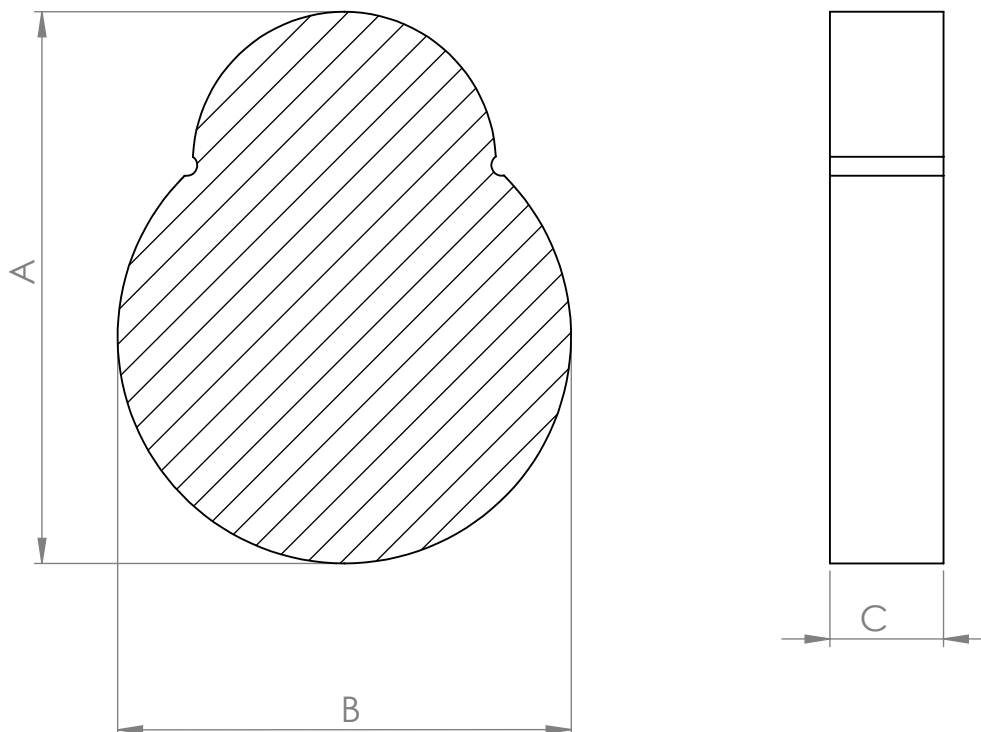


Standard brake block type 07a



Prod No.	Dimension A (mm)	Dimension B (mm)	Dimension C (mm)
Blok 07a-01	253	170	55
Blok 07a-02	248	203	64
Blok 07a-03	248	203	57
Blok 07a-04	178	146	50
Blok 07a-05	178	146	44
Blok 07a-06	178	146	38
Blok 07a-07	152	127	57
Blok 07a-08	85	70	42